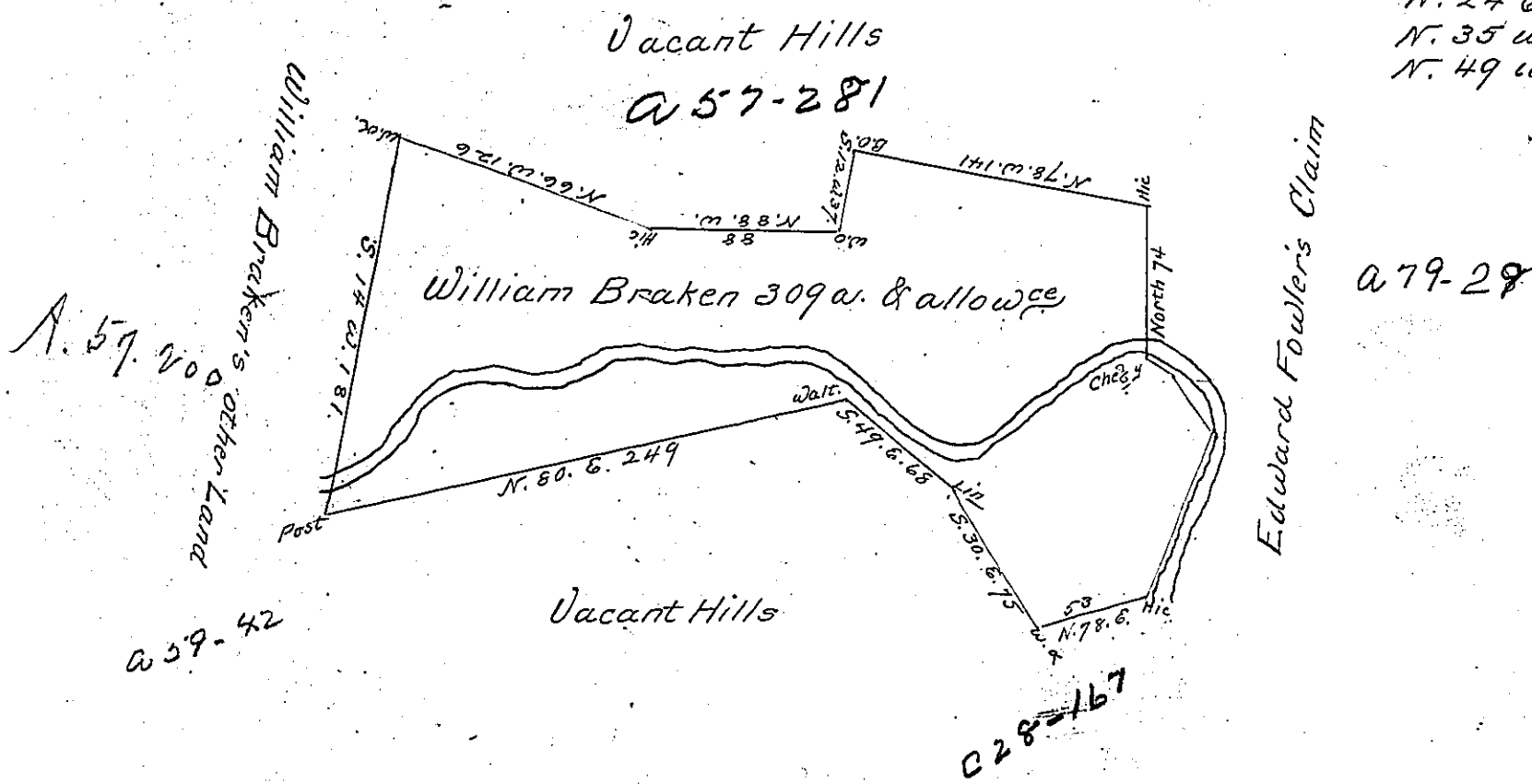


Courses & Distances  
Down the Creek

N. 24 E. 83  
N. 35 W. 30  
N. 49 W. 14



Survey'd to William Braken on the 21<sup>st</sup>.  
 Day of May 1774 The above described Tract of three  
 hundred & nine acres & allowance of Six pl<sup>ts</sup>. Situate  
 in Black Lick Creek Including his Improvement  
 & Cabin built by Matthew Fowler in Westmoreland  
 County. By Warrant of the 13<sup>th</sup>. Day of December  
 1773.

p. Joshua Elder D.S.

To John Lukens Esqr. S. Genl.

IN TESTIMONY that the above is a copy of the original remaining on file in  
 the Department of Internal Affairs of Pennsylvania, made  
 conformably to an Act of Assembly approved the 16th day of  
 February, 1833, I have hereunto set my Hand and caused  
 the Seal of said Department to be affixed at Harrisburg,  
 this first day of April 1902



*James W. Latta*  
 Secretary of Internal Affairs.